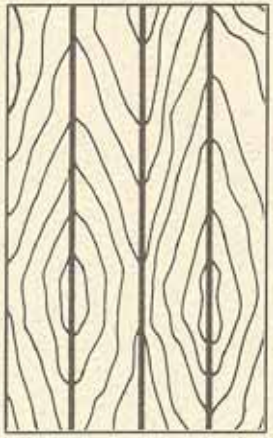


# ***VENEER MATCHING***

Within each sheet of Curvwood, there will be several panels of veneer. The number of panels is determined by the width of the flitch. The method in which the panels are laid up on a sheet greatly affect the appearance of Curvwood. The three most common methods of matching veneer within a sheet are:



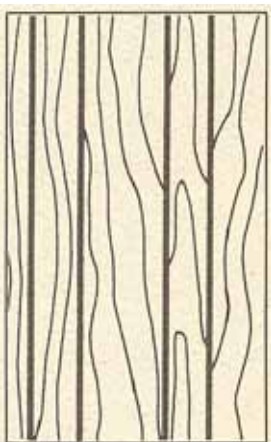
## **ARCHITECTURAL OR BOOK MATCHING**

In architectural matching, every other sheet of veneer is turned over to achieve a continuous, flowing, and balanced pattern.



## **SLIP MATCHING**

In slip matching, the sheets of veneers are joined side by side. The grain pattern is repeated from sheet to sheet.



## **RANDOM MATCHING**

In random matching, veneers from several different logs and flitches are carefully selected and deliberately mismatched for the most desirable effect and appearance.

Curvwood Veneer

[www.curvwood.com](http://www.curvwood.com) ◇ [sales@curvwood.com](mailto:sales@curvwood.com) ◇ 800-527-9014 ◇ FAX 214-631-4654